

## Follow these instructions to start your FUV

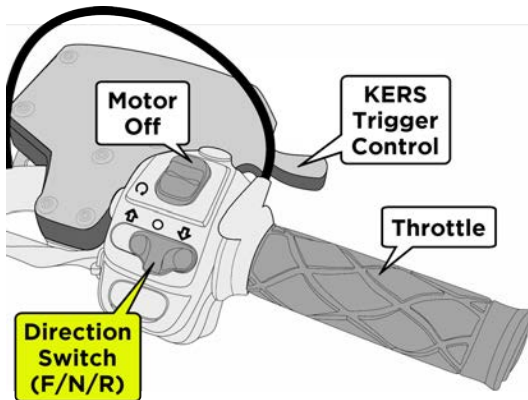
Refer to the FUV Owner's Manual (available at [www.arcimoto.com](http://www.arcimoto.com)) for details on safely operating the FUV and on using all of its features and functions.

### 1) Buckle Up

Sit down in the FUV, and fasten both front Seat Belts. If you have a passenger, make sure they are buckled up as well.

### 2) Put the FUV in Neutral

Set the Direction Switch on the right grip to **Neutral** (the center position, indicated by a dot).



### 3) Turn the FUV ON

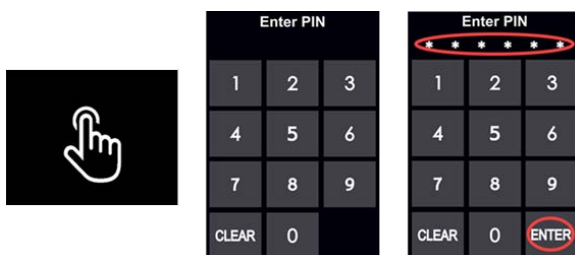
When the FUV is OFF, the Display is black. Turn the FUV ON via either the Key or by using the PIN keypad on the Display as described below.

#### Turning the FUV ON with the Key

Insert the key and turn it to the **ON** position.

#### Turning the FUV ON via PIN

1. Press anywhere on the Display to invoke the Enter PIN keypad.



2. Enter the 6-digit PIN assigned to the FUV.

Refer to the FUV Owner's Manual for details on using the Factory PIN and setting a custom User PIN.

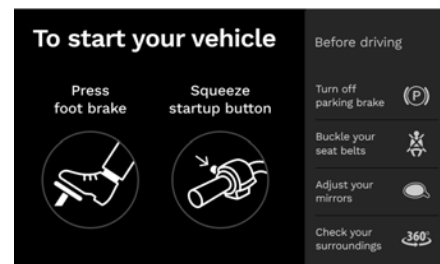
3. Press **ENTER** to turn the FUV ON and open the *To start your vehicle* screen.

### Startup Screens

When the FUV is turned on, the first screen displayed is the Arcimoto logo screen.

In a few seconds, the first of several Startup Screens displays, providing visual instructions and cues to start the FUV.

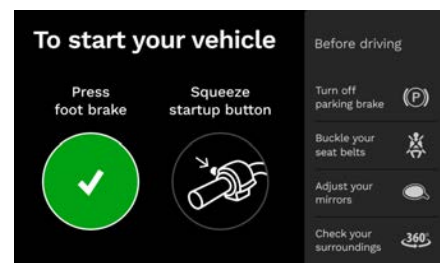
### 4) Start the FUV



#### NOTE

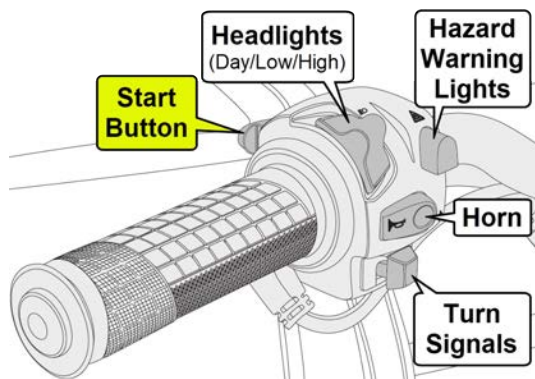
FUVs manufactured after March 2023, and FUVs that have had the display firmware upgraded after March 2023 have a simplified start-up sequence. On those FUVs, it is not necessary to squeeze the Start button. Follow the instructions on the display.

As the screen indicates, press the Brake Pedal completely down. When the Brake Pedal is pressed sufficiently, a green check mark appears on the screen, replacing the Brake Pedal graphic:

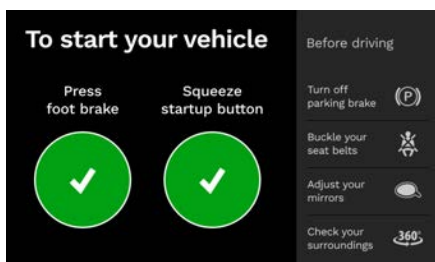


Note that the screen indicates if the Brake Pedal has not been pressed sufficiently. In this case, apply more pressure to the brake pedal until a green check mark appears under **Press foot brake**.

Once the green check mark displays for the brake pedal, squeeze the **Start** button on the left grip:



This will update the screen again, with a green check mark replacing the Startup Button graphic:



Once the FUV starts, release the Start button.

At this point, the FUV is started and is ready to drive. However, it is important to follow the four steps listed on the screen under "**Before Driving**":

- **Turn off parking brake:** Check the Parking Brake button on the Control Panel. If the LEDs on the button are lit, then the Parking Brake is ON. Press the Parking Brake button to turn off the parking brake before driving.



When all three LEDs on the button are off, the Parking Brake is released.

#### NOTE

For safety, press and hold the Brake Pedal while releasing the Parking Brake.

- **Buckle your seat belts.**
- **Adjust your mirrors.**
- **Check your surroundings**

## 5) Drive

Once the FUV has been started, the Display updates to show the *Drive* screen.

The Drive screen provides all the information you need to operate the FUV in a simple visual layout.



### A) Set the Direction Switch

Use the Direction Switch on the right grip (see page 1) to select a safe direction of travel.

- Select UP (↑) for **Forward**
- Select DOWN (↓) for **Reverse**.

**Note:** As a safety feature, the Direction Switch must be switched from Neutral to Drive (Forward or Reverse) before the FUV will move.

### B) Twist the Throttle to Drive

Gently twist the throttle to go!



Because the FUV is silent, it may not be obvious that the vehicle is in Drive mode. Never leave the FUV unattended while powered on.

### KERS Trigger Control

Pull the KERS Trigger Control on the right hand grip (see page 1) to activate the Kinetic Energy Recovery System ("KERS"). This feature allows you to harness kinetic energy from the moving FUV to recharge the HV Batteries while you drive.

**Activating the Energy Recovery System will cause the FUV to slow down. However, the KERS Trigger is NOT a brake.**



Always rely on the Brake Pedal to stop the FUV. Braking improperly could result in loss of control, which could result in serious injury or death.



Refer to the FUV Owner's Manual for additional safety information. Follow all safety notes and warnings. Always wear Seat Belts, and obey all traffic laws. Failure to do so may result in significant risk of injury or death.

#### Customer Support

(541) 780-0032  
[support@arcimoto.com](mailto:support@arcimoto.com)

#### Contact Information

2034 W. 2nd Ave.  
Eugene, OR 97402  
(541) 683-6293  
[info@arcimoto.com](mailto:info@arcimoto.com)